

DISCIPLINA.....: GNAM EMBA WEEK JUNE 2020 | Sustainability Expedition: Tapajós
DEPARTMENT : Production management and operations (POI)
COURSE.....: CG | FGV EAESP
PROFESSOR.....: Mario Monzoni and team to be defined
TYPE OF COURSE.....: GNAM WEEK
SEMESTER/YEAR: 2º/2020

IMPORTANT:

- 25 vacancies for GNAM EMBA students
- **Period:** June 7th to 13th, 2020
- **Cost: BRL 4.000** (ca. USD 1.000) | covering airfare for a return ticket from Sao Paulo to Santarém, two nights in Santarém hotel, 4 nights on boat, including breakfast and dinners.
PLEASE NOTE that participants will still have to pay for their flight from abroad to Sao Paulo as usual in GNAM network weeks.
- **Selection criteria:** program priorities; disponibility to trip conditions (according to the form that was sent to your GNAM coordinator)

OBJECTIVES

‘Sustainability Expedition: Tapajós’ is a learning experience where students can directly interact with part of the Amazon territory and its local actors, with the whole group and with themselves in order to learn and reflect about: (i) Sustainable Development, as a formal topic; and (ii) Sustainable Development as a key driver to more responsible and contemporary type of leadership and decision making processes.

Based on that, the discipline objectives are:

- To present and make tangible, through experiential, collective and theoretical learning, questions that permeate the concepts of sustainable development and leadership for sustainability.
- To promote field research and reflection on development models present in the territory visited, from the contact and relationship with different realities and social actors (companies, local communities, NGOs, etc.).
- To develop critical thinking that integrates perspectives on the environment, society, economy, politics, ethics and human values to decision making and leadership abilities.

Based on that, we hope that at the end of the discipline students will be able:

- To observe and identify the systemic impacts and influences of decisions / actions of public, private and nongovernmental organizations, as well as individuals, for local and global sustainability.
- To understand and revise sustainable development concepts, connecting them with other disciplines from the field of Business Administration.
- To understand the importance of articulation and dialogue in the search for convergence of interests between the different actors involved in a given context.
- To mobilize and carry out actions in order to incorporate sustainability into their reflections and practical actions.
- To observe and understand different perspectives of Leadership, conceptualizing what means to lead for sustainability.

AGENDA (to be confirmed)

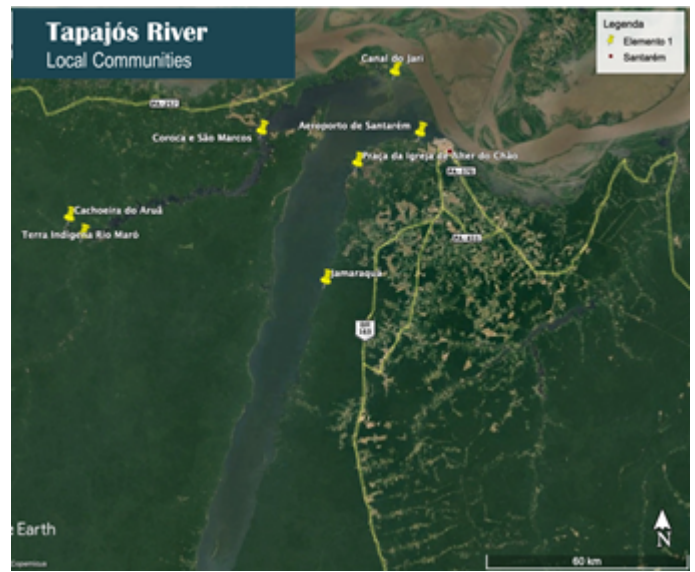
Our course begins on June 7th at 7:30am at the Guarulhos International Airport (Sao Paulo) when we leave to the state of Pará on June 7th evening, and begin our journey through the Tapajós Basin on June 8th. After our arrival at the hotel in Santarém at around 4pm, we will have a preparation class. We return to São Paulo on June 13th.

The municipalities of the Tapajós Basin in the state of Pará make up a region of natural, social, environmental and cultural heritage of humanity, combining history, tradition, rich and important political issues, which reveal conflicting interests. It can be said that the region is a representation of so many other Brazilian realities and their complex development scenarios as we can also see in other tropical regions of the planet.

To promote effective sustainable development learning experiences, and therefore business projects and initiatives, we need to consider local realities and perspectives. So along the route of 'SUSTAINABILITY Expedition: TAPAJÓS', we will visit places and talk to people around the Tapajós River that include private organizations, Conservation Units, National Forests, traditional communities, non-governmental organizations and so forth.

The itinerary in Pará is organized in partnership with Ecotoré Social Environmental Services – a local agency that supports and advises companies, government bodies and third sector organizations in initiatives that seek to build and integrate ethical relations and reconnections between society and nature.

Detailed Itinerary						
June 7 th (Sunday)	June 8 th (Monday)	June 9 th (Tuesday)	June 10 th (Wednesday)	June 11 th (Thursday)	June 12 th (Friday)	June 13 th (Saturday)
3_Flight São Paulo – Santarém (around 7:30am) _Arrival at Santarém Hotel (around 4pm) _Preparation Class (at the hotel)	_Bus trip to visit COOMFLONA forest management site _Meetings with COOMFLONA and TURIARTE, NGO PSA and ICMBio _Night at Santarém hotel	_ Boarding on regional boats in Santarém, where the group will stay until July 12 _Visits to Arapiuns River communities	_Visits to Arapiuns River communities _Conversations with local leaders	_Visits to Tapajós National Forest communities _Conversations with local leaders	_ Trekking in the forest _Working group activities during navigation time to Alter do Chão _Dinner and local cultural experience in Alter do Chão	_Breakfast on boat _Flight to São Paulo around 4pm (arriving at São Paulo at night – around 10pm)



PLEASE NOTE | FGV EAESP will book the air tickets from Sao Paulo to Santarém for the entire group in order to assure that we are all on the same flight. These air tickets are covered by the BRL 4.000 that you will have to pay (see introduction).

São Paulo – Santarém | June 7th 2020

LATAM 08:35 1 parada 15:50 7h 15m

LATAM Airlines Group Voo LA3562 - Airbus A321-100/200
 7.1 Bom

Dom 07 Jun 08:35 GRU São Paulo Aeroporto Internacional Guarulhos	Duração 1h 40m Econômica	Dom 07 Jun 10:15 BSB Brasília Aeroporto Presidente Juscelino Kubitschek
---	--------------------------------	--

⊙ Espera de 3h em Brasília (Troca de avião)

LATAM Airlines Group Voo LA3080 - Airbus A320-100/200
 7.1 Bom

Dom 07 Jun 13:15 BSB Brasília Aeroporto Presidente Juscelino Kubitschek	Duração 2h 35m Econômica	Dom 07 Jun 15:50 STM Santarém Aeroporto Maestro Wilson Fonseca
--	--------------------------------	---

Santarém – São Paulo | June 13

←VOLTA
Sáb 13 Jun 2020
STM
Santarém
GRU
São Paulo
Bagagem

16:30
1 parada
22:05
5h 35m

Voo LA3081 - Airbus A320-100/200

Sáb 13 Jun

16:30

STM
Santarém

Aeroporto Maestro Wilson Fonseca

— Duração —

2h 35m

Econômica

Sáb 13 Jun

19:05

BSB
Brasília

Aeroporto Presidente Juscelino Kubitschek

⌚ Espera de **1h 5m** em Brasília (Troca de avião)

Voo LA3381 - Airbus A321-100/200

Sáb 13 Jun

20:10

BSB
Brasília

Aeroporto Presidente Juscelino Kubitschek

— Duração —

1h 55m

Econômica

Sáb 13 Jun

22:05

GRU
São Paulo

Aeroporto Internacional Guarulhos

***Regional Boats**

Most of our trip will take place in a local boat:

- The boat contains all the security structure needed (safevests, radio, support boat, and experienced crew).
- There is two bathrooms (men and women) on the boat.
- Participants sleep in hammocks.
- All the food is prepared and served on board (participants food restrictions and allergies are asked previously); non-alcoholic beverage is included in the trip cost.
- Shower and toilet water come from the own river; there is no heating system in the boat, but due to local weather (approximately 30°C/86°F) this is not needed.



**** Santarém / Alter do Chão region**

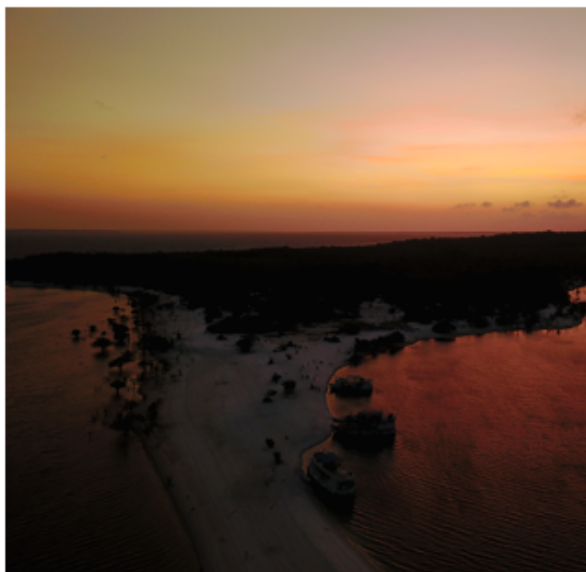
Visit options include: Cargill Port, Regional University, Alter do Chão village



*****Local Communities and National Forest**

Visit options include: Communities of São Miguel and São Marcos for a practice of flour production in a Traditional Flour House; Aruã Waterfall Community for a visit to local hydroelectric power station; Community of Coroca, in the Agroextractivist Lago Grande Settlement for a visit to Community Based Tourism Project, fish and chelonian breeding, native bees (stingless) and handicrafts.





OTHER IMPORTANT INFORMATION

- Yellow Fever vaccine is mandatory. But, like Malaria, it is a disease that has not existed for many years in the region.
- Repellents can be brought in, especially for allergy sufferers and those who bother more, but are not treated. In some places, such as Igapós, and at certain times, as in the late afternoon, one or another mosquitos can be found.
- It is not necessary to bring hammocks as they are made available. Mosquito nets are NOT required.
- There is a generator on the boat, but the flashlights can be useful at night, with the generators off.
- For those who have mild sleep problems or are very uncomfortable with noises, we suggest hearing protectors.
- No hypochlorite, tablets, etc., we have mineral water available.
- On food, most days we will have our meals aboard the boat, so menu options are restricted: it mainly includes rice, beans, vegetables and local fish. Feel free to bring your own snacks.
- In very few moments (very seldom) we will have wifi and cell phone signal. Tell your relatives about it! The boat contains a security structure, a radio, a support boat, etc ... so anything that might happen, we will do the procedures and get in touch with them.

EVALUATION

To be defined – includes pre-work, self-evaluation and group essay.

BIBLIOGRAPHY (INITIAL SUGGESTIONS)

HARDIN, Garrett (1968) The Tragedy of the Commons. Science. vol. 162, p. 1243–1248.

CORBRIDGE, S (2002) Development as freedom: the spaces of Amartya Sen. Progress in Development Studies 2,3, pp. 183–217

JACKSON, Tim (2009). Prosperity without growth? The transition to a sustainable economy. Sustainable Development Commission. Disponível em: <http://www.sd-commission.org.uk/>

DEARING et al. (2014) Safe and just operating spaces for regional social-ecological systems. Global Environmental Change 28, pp.227–238

RAWORTH, k. (2013) Defining a Safe and Just Space for Humanity. In Worldwatch Institute, State of the World 2013: Is Sustainability Still Possible? DOI 10.5822/978-1-61091-458-1_3 (Chapter 3, pp.28-38)

MAAK, T., & PLESS, N. M. (2006). Responsible leadership in a stakeholder society - A relational perspective. In Journal of Business Ethics (Vol. 66, pp. 99–115). <https://doi.org/10.1007/s10551-006-9047-z>